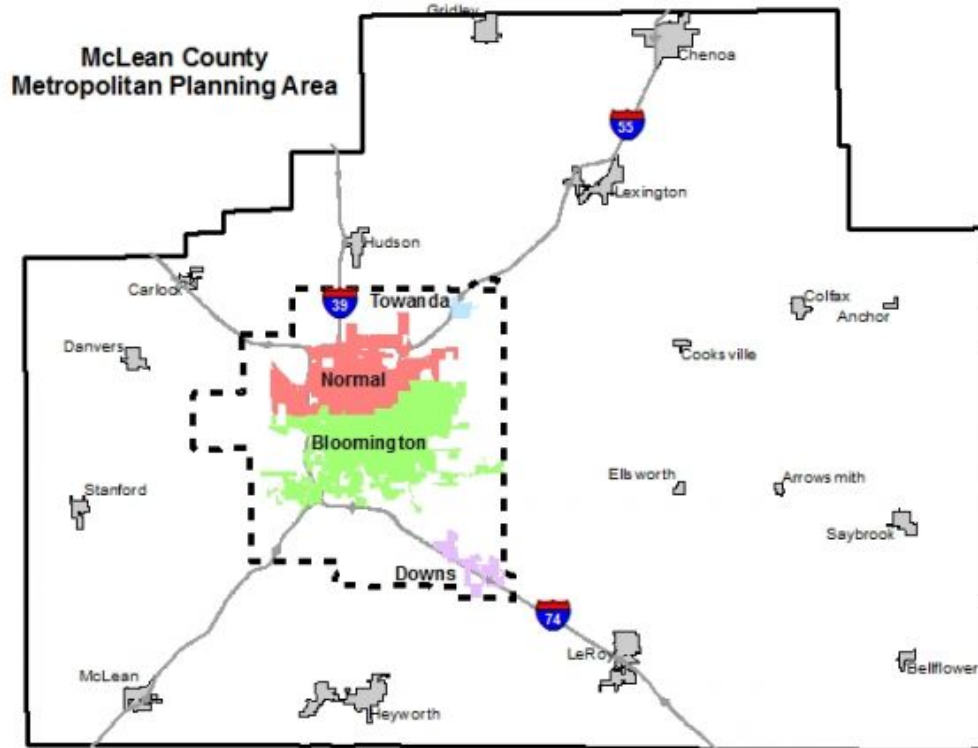


McLean County Regional Planning Commission

Evolution and History

March 2, 2022



Cassidy Kraimer
ISU Stevenson Fellow

Two Hats of MCRPC



What is a Metropolitan Planning Organization?

The **1962 Federal-Aid Highway Act** required the formation of a MPO for all urbanized areas, that is metropolitan areas, with a population greater than 50,000.

MPO's were established to ensure that existing and future expenditures for transportation projects and programs were based on a **Comprehensive, Cooperative, and Continuing** (3-C) planning process.

MPOs receive federal funding from formula programs for major **transportation projects** and publishes the following major planning documents:

- **Unified Work Program (UWP)**
 - Every year, includes all metropolitan transportation planning projects for one horizon.
 - MCRPC submits to IDOT for approval prior to every new Fiscal Year that begins on July 1st.
- **Transportation Improvement Program (TIP)**
 - Every year with a minimum four year approved list of federally funded transportation improvements.
- **Federal Obligated Projects List**
 - Every year, includes federal project funding in prior year
- **Metropolitan Long-Range Transportation Plan**
 - Every 4 - 5 years with minimum 20 year planning horizon.
- **Title VI/Civil Rights Report & Plan**
 - Every 3 years
- **Public Involvement Plan/Public Participation Plan (PPP)**
 - Every 3 years
- **Human Services Transportation Plan**
 - Updated periodically

MCRPC Overview

Vision

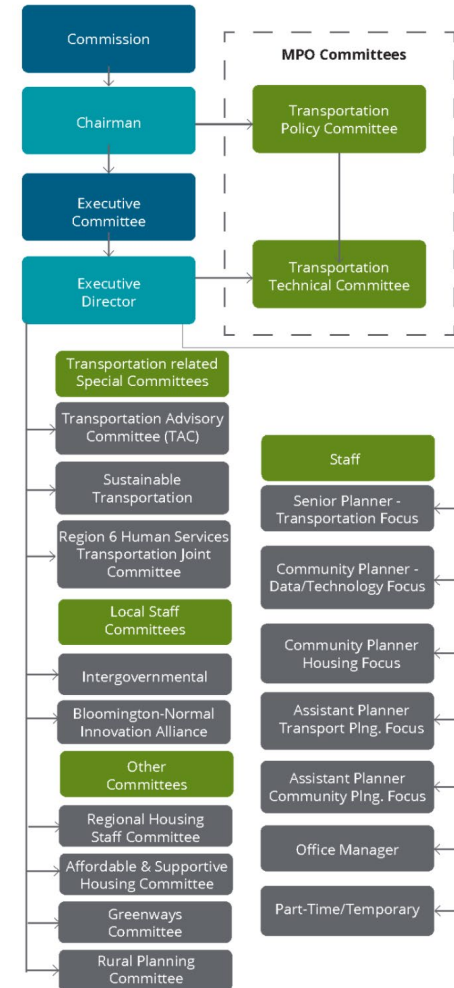
MCRPC is the leader for planning tomorrow's McLean County.

Mission

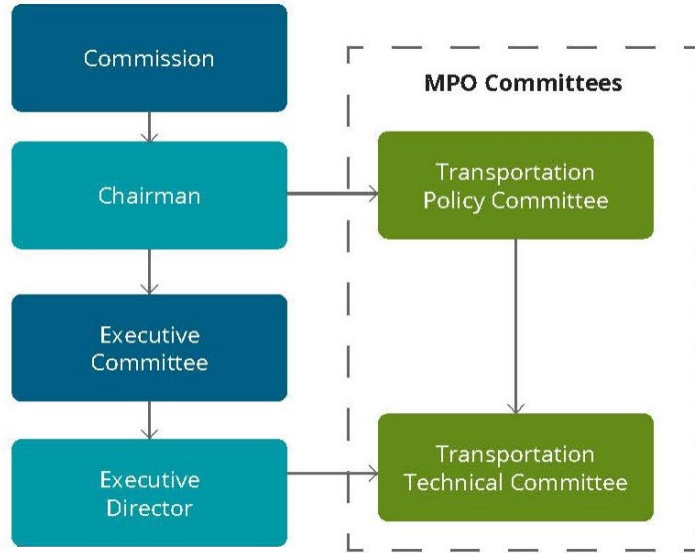
We bring expert planning, deep local knowledge and vibrant public participation as we shape our future to promote opportunity, livability and sustainability.

Values

- Regionalism
- Governance
- Service
- Innovation
- Advocacy
- Inclusion
- Professionalism & Excellence

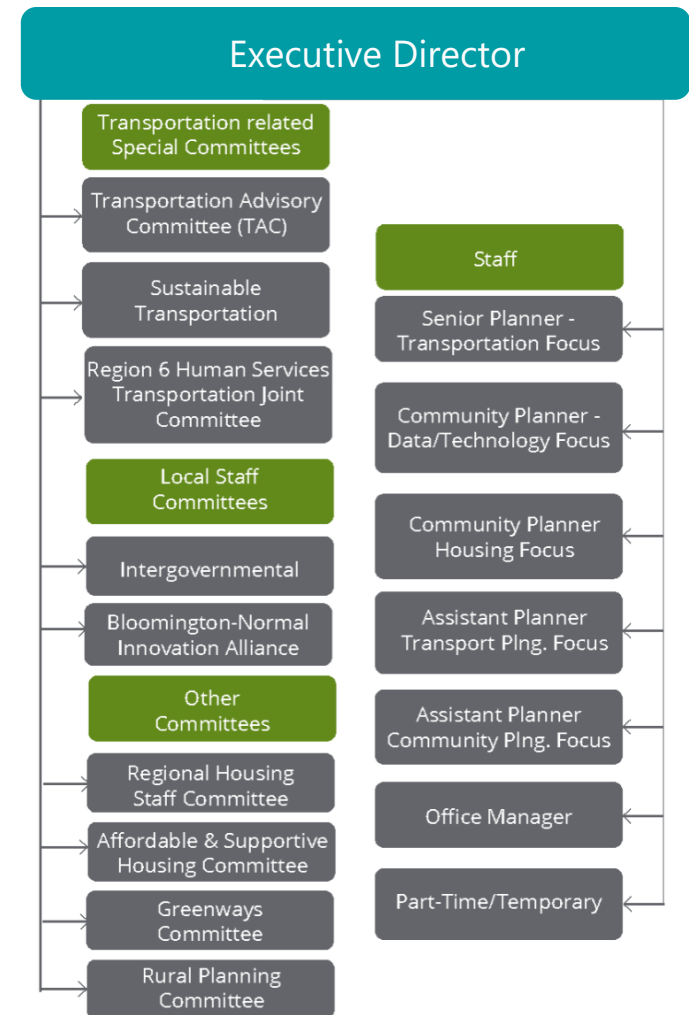


MCRPC Structure

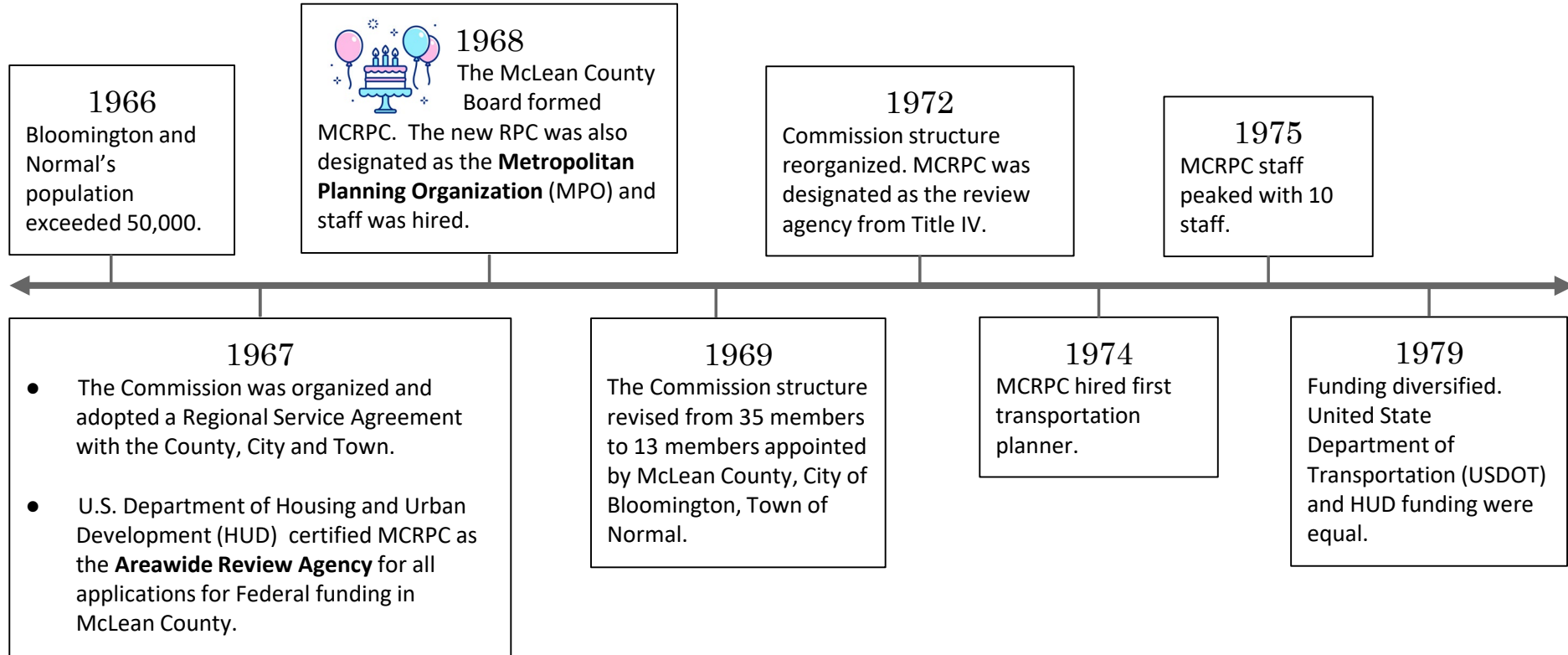


MCRPC Bylaws

Adopted October 6, 1993, most recently amended on March 3, 2021

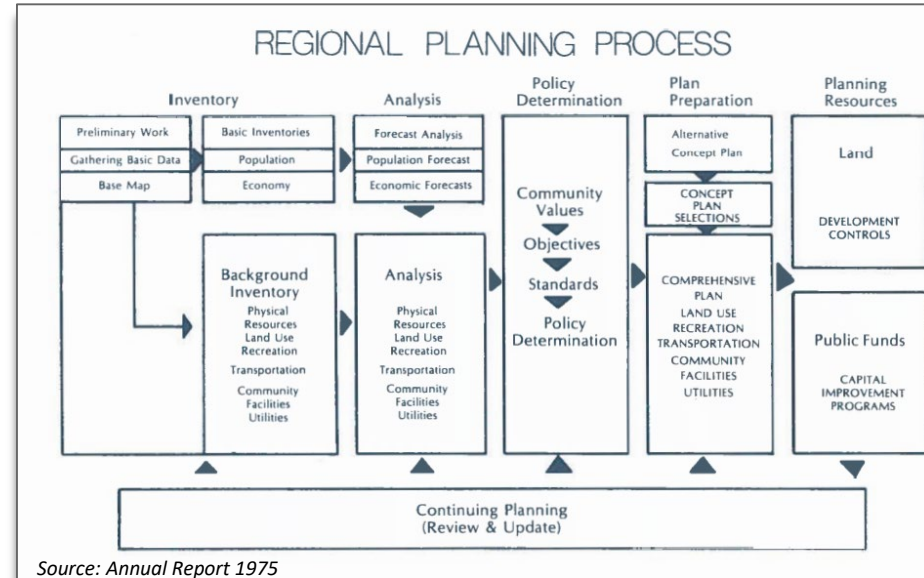


1966 - 1979 Timeline



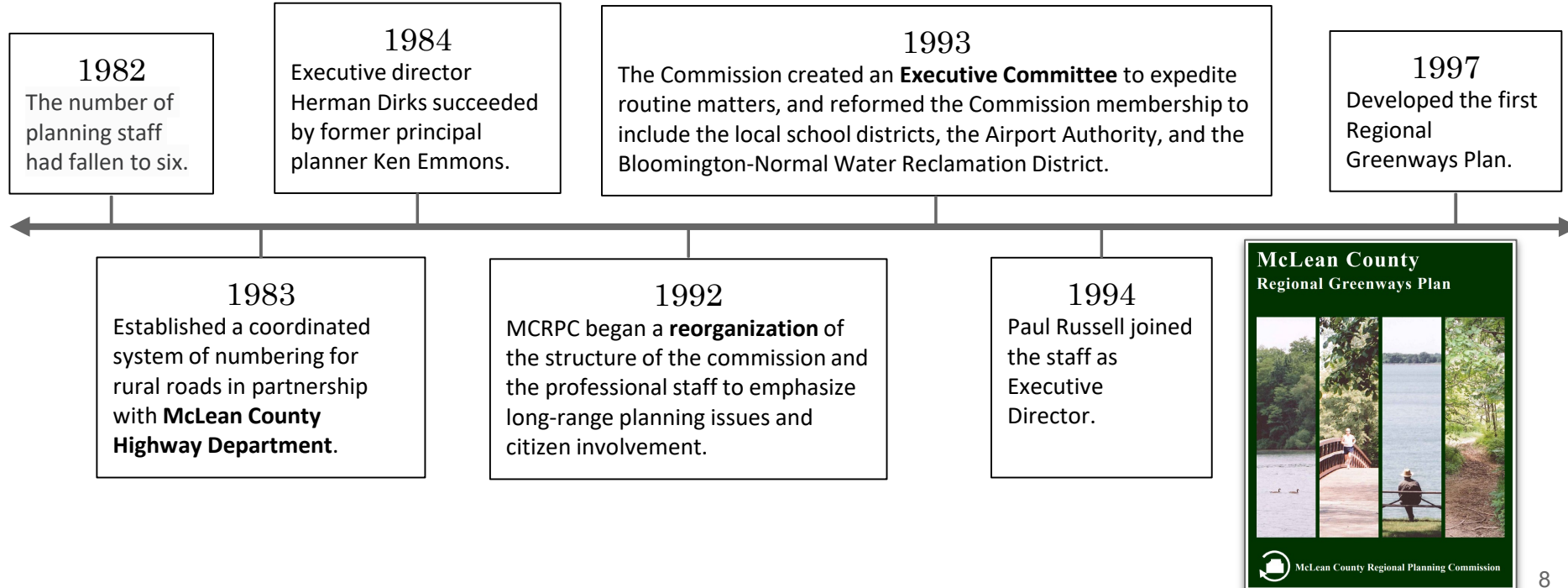
1968 - 1979 Tasks and Activities

- Conducted research and planning for transportation.
- Administered a **law enforcement program** for McLean County with funding by the Illinois Law Enforcement Commission.
- Began creating **regional development policy standards**, planning coordination, a regional facilities study, a regional housing analysis
- Developed **Comprehensive Development Guide**.
- Assisted the McLean County Board of Health in developing **Human Service Plan for McLean County**.
- Prepared an application for the provision of **911 service** as required by the state.
- Prepared **Comprehensive Plans and Zoning Ordinances** for rural communities including Saybrook and LeRoy.
- Prepared Sign Ordinance, Beautification Plan, and Tree Planting policies for Bloomington.
- Established Bloomington West Side Development Committee
- Administered many grants including **HUD, IDOT, IEPA, DHS**.
- Completed a Financial Impact Analysis Report for annexations.
- Partnered with area hospitals, Bloomington, and Normal to prepare a study analyzing the need and costs for **paramedic service**.



1980 - 1999 Timeline

Transportation funding began to outpace HUD funding, which ceased to be used by end of 1990.



1980 - 1989 Tasks and Activities

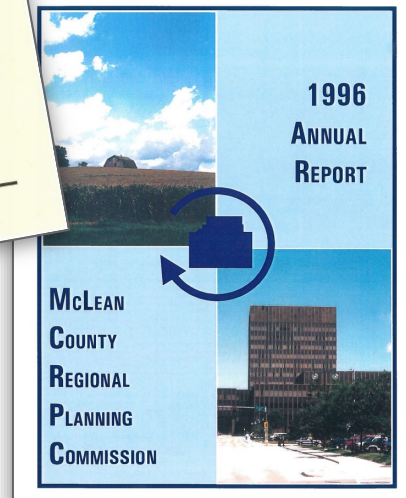
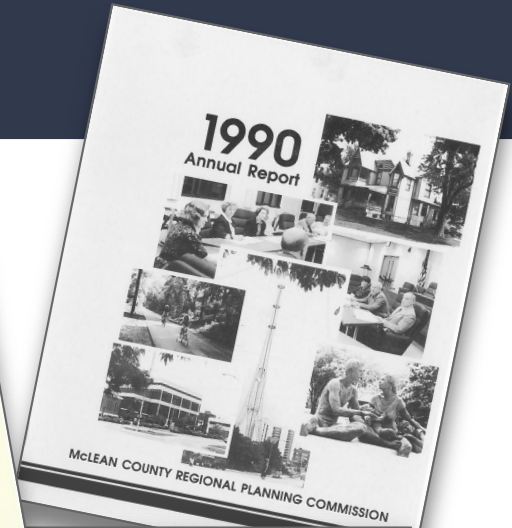
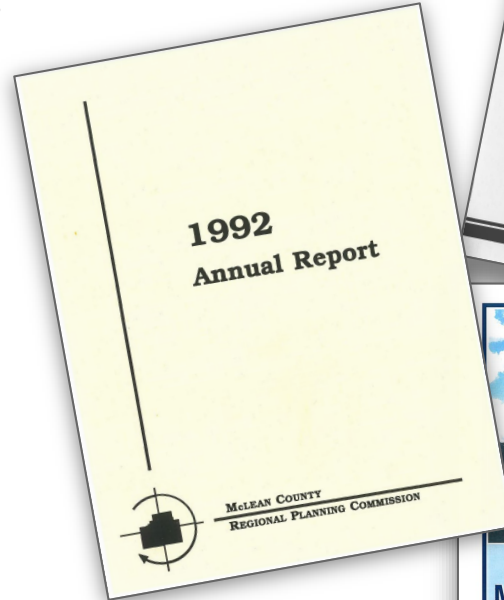
- Coordinated a study of area flooding problems and **managed the federal flood insurance program.**
- Worked with Bloomington's Department of Urban Development to form a citizens committee to gather public participation for **updated recommendations on the Land Use Plan** for Bloomington's West Side and creation of the **West Side Development Guide.**
- Prepared a five-year plan to help with **Bloomington's Community Development Program.**
- Provided planning assistance to **McLean County Economic Opportunity Corporation.**
- Provided population and economic forecasts for the entire county and District 87 student population.
- Began a **Solid Waste Management Study.**
- Performed **energy audits** for major McLean County facilities.
- Created **Health Care Program recommendations** for City of Bloomington in conjunction with City and Township staff.



Shown above is a portion of one of the aerial photographs taken by Aero-Metric Engineering Co., Inc. as a part of the stormwater drainage study

1990 - 1999 Tasks and Activities

- MCRPC reorganized to emphasize **long-range planning** in light of very rapid growth.
- Developed a **McLean County Comprehensive Plan**.
- Spearheaded a joint aerial imagery project.
- Served as a driving force in creation of the **McLean County GIS Consortium (McGIS)**.
- Created a draft regional water needs intergovernmental agreement.
- Developed the **Southwest Bloomington Plan** in response to rapid growth.
- Completed the final report on the **Solid Waste Needs Assessment**.
- Disseminated data from **1990 Census** and coordinated **2000 Census efforts**.
- Conducted a **historic building survey** for Bloomington.



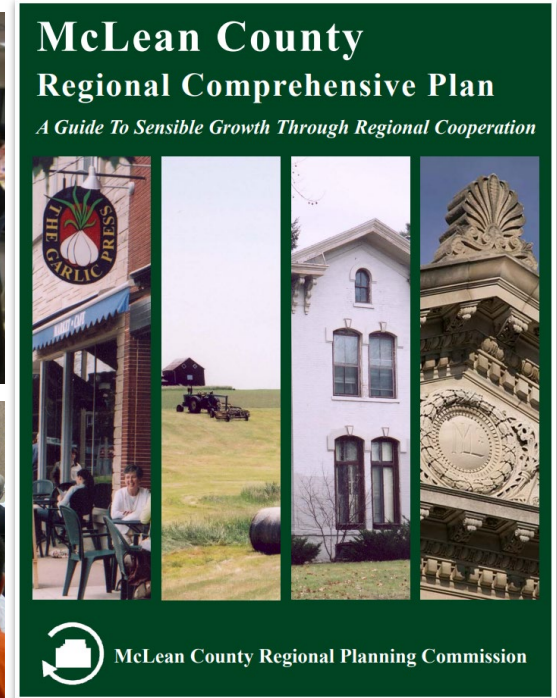
2000 - 2021 Timeline

Reinvented RPC as a regional partner and began engaging the community more broadly and deeply



2000-2009 Tasks and Activities

- Instituted **Consistency Review process** to evaluate land developments against comprehensive plans.
- Established Community Information Forum, the first year's theme was "How Good Planning Can Make Your Community Attractive to People and Business".
- Updated **Bloomington and Normal's Comprehensive Plans** as well as those for rural communities including Chenoa.
- Completed plans for Lexington, neighborhood plan for Bloomington's Dimmitt's Grove Neighborhood, an area plan for North Normal, a regional plan for Logan County with plans for Lincoln, Atlanta, Mount Pulaski, and Elkhart.
- Developed the **McLean County Regional Comprehensive Plan** in 2009.
- Developed Main Street Redevelopment Plan.
- Disseminated data from 2000 Census and coordinated 2010 Census efforts.



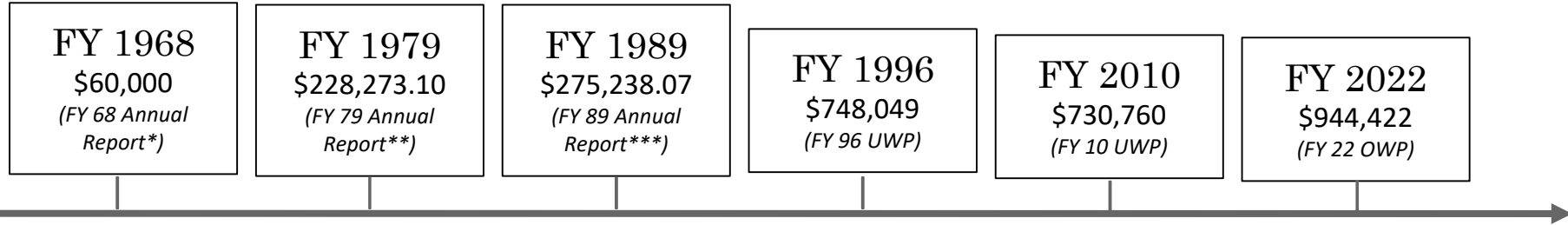
2010-2021 Tasks and Activities

- Began a partnership with the **West Bloomington Revitalization Project**.
- Updated the natural resource inventory for McLean County.
- Completed **BN Home**, the first regional housing study since the 1970s and the regional **Consolidated Plan** for Bloomington and Normal's Community Development Block Grants (CDBG).
- **Regional Housing Initiative**, led by MCRPC, began.
- Greenways Advisory Committee re-structured and re-focused.
- MCRPC was the lead agency for indicators and metrics task force for **BN Advantage**.
- Partnered with area hospitals, McLean County Health Department and others in developing the **first Regional Health Plan**.
- Developed and adopted **Go:Safe McLean County Action Plan**, a transportation safety plan.
- Agreement executed with Connect Transit to provide technical assistance and planning services.
- Initiated relationship with Illinois State University for hosting Stevenson Fellows.



Budget Through the Years

Initial funding came only from the **local governments**, but by the end of 1969, 47% of the proposed 1970 budget came from HUD. In the 1980s, HUD funding ceased and by the late 1990s, federal transportation funding became the greatest portion of consistent funding.



5 Fiscal Years

- Federal: October 1st - September 31st
- State (UWP): July 1st - June 30th
- County (OWP): January 1st - December 31st
- City of Bloomington: May 1st - April 30th
- Town of Normal: April 1st - March 31

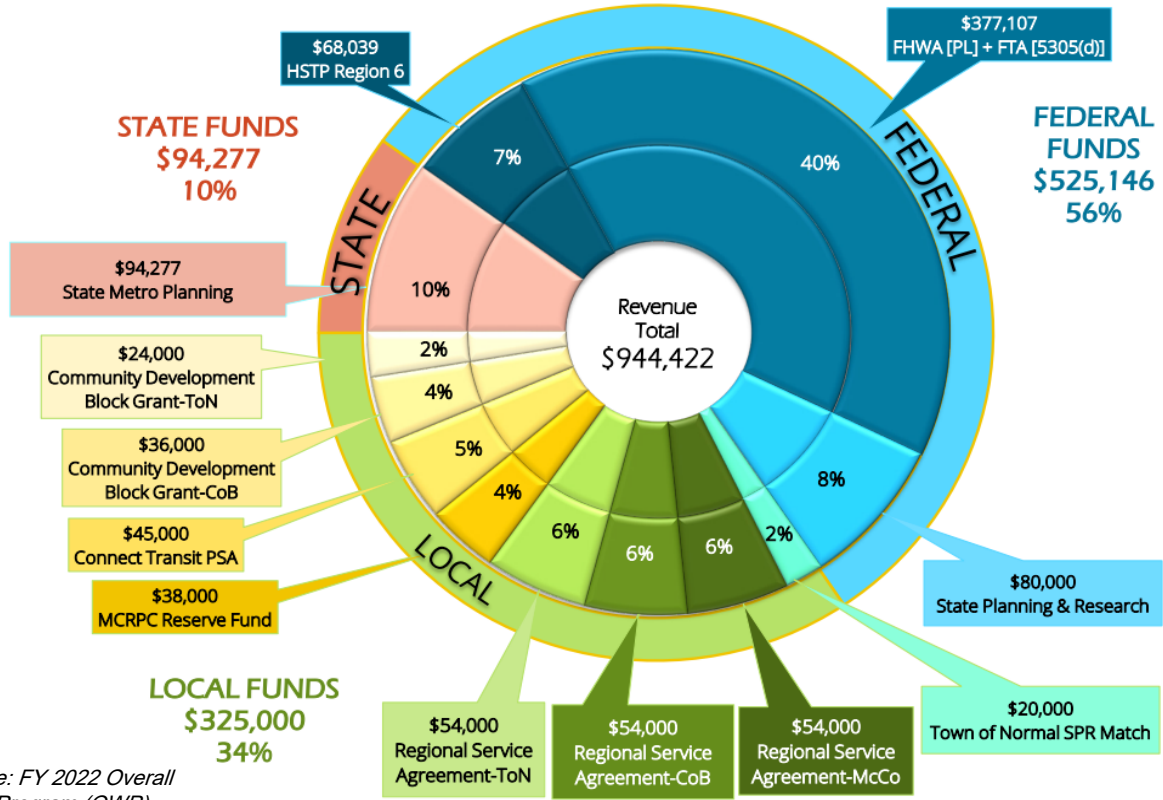
*FY 68 was reported for December 1st, 1968 - November 30th, 1969

**FY 79 was reported for December 1st, 1978 - November 30th, 1979

***FY 89 was reported for January 1st, 1989 - December 31st, 1989

Budget Today

FY 2022 - Revenue Sources by Fund



Source: FY 2022 Overall Work Program (OWP)

1979

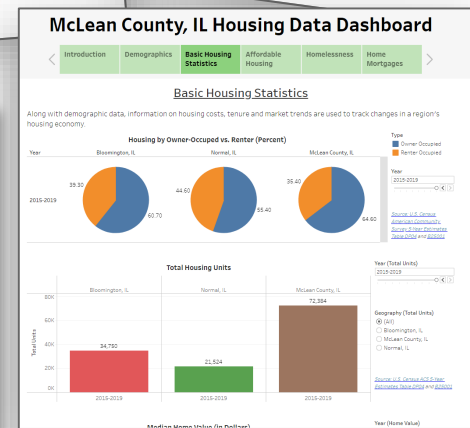
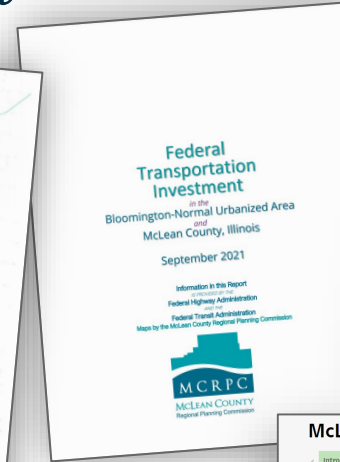
INCOME	
McLean County (grant)	\$ 26,775.00
McLean County (maps)	666.10
Health Department	1,837.50
	\$ 29,278.60
Bloomington (grant)	\$ 16,000.00
Bloomington (C.D.)	29,877.90
Bloomington (Central Area)	4,503.90
	\$ 50,381.80
Normal (grant)	\$ 5,200.00
Bloomington Unlimited	40,173.45
H.U.D. (7-288)	3,999.14
H.U.D. (8-288A)	10,887.34
H.U.D. (8-288)	
	\$ 60,259.93
F.H.W.A.	
I.D.O.T.	
U.M.T.A.	
I.E.P.A.	
	\$ 3,246.14
	\$ 15,300.00
	\$ 4,643.42
	\$ 227,598.60
Total Income	
Total Funds Available	\$ 228,273.10

1989

Income:	
Bloomington — Planning Services Agreement.....	\$ 36,000.00
Normal — Planning Services Agreement.....	68,000.00
McLean County — Planning Services Agreement.....	30,000.00
Federal Highway Administration — Transportation Study....	54,910.54
Urban Mass Transit Administration — Transportation Study....	28,219.98
Bloomington Historic Preservation — Transportation Study....	6,000.00
Solid Waste Management Study.....	
Bloomington.....	
Normal.....	
McLean County.....	12,000.00
City Wide Survey.....	12,000.00
Fair Housing Study.....	8,000.00
Interest Income.....	4,000.00
Expense Account Credits.....	1,583.98
	2,523.57
	\$ 275,238.07

Work Elements & Tasks Today

- General Administration
- Local Planning and Technical Assistance
- Regional Housing Initiatives
- Comprehensive Planning and Technical Assistance
- Transportation Planning and Technical Assistance
- Data Gathering, Technology, and Smart Cities
- Education and Outreach
- Human Services
- Transportation Plan (HSTP)
- Special Planning and Regional Projects



Questions?

For more information visit www.mcplan.org

