

**McLean County Regional Planning Commission
1982 ANNUAL REPORT**





McLean County Regional Planning Commission

Suite 201 • 207 West Jefferson St. • Bloomington, Illinois 61701 • Phone: 309-828-4331

Honorable Mayor and Members
of the Bloomington City Council
President and Members of the Normal Board of Trustees
Chairman and Members of the McLean County Board
Citizens of Bloomington, Normal and McLean County

Ladies and Gentlemen:

The McLean County Regional Planning Commission is pleased to present, herewith, its Fifteenth Annual Report covering activities for the year ending November 30, 1982. The report indicates the major aspects of the year's work as well as the goals that remain to be accomplished in the future.

The staff and the Commission are indebted to those responsible for the cooperation of all governmental units and those individuals who have given so generously of their time, advice and inspiration in assisting our work of regional planning. We hope that we can merit their continued support and cooperation.

Sincerely yours,



Garrett Scott

Garrett Scott
Chairman

Herman Dirks

Herman Dirks
Executive Director

Responsibilities

The Commission is responsible for the preparation and maintenance of a Comprehensive Regional Plan for McLean County, the preparation of special planning studies for units of local government, and for providing the County Board, the Bloomington City Council and Planning Commission, the Normal Board of Trustees, Planning Commission and Zoning Board of Appeals with certain basic planning services designed to assist them in making day-to-day decisions which have planning and development implications.

Membership

The following persons were members of the McLean County Regional Planning Commission on November 30, 1982:

County

Danny J. Leifel, Bloomington
John English, Bloomington—Secretary/Treasurer
Verne Erdman, Hudson
Evan Evans, LeRoy
Ann Nadakavukaren, Normal
Mary Ann Schlipf, Bloomington

Bloomington

Gary Scheets
Karl Passmore—Vice Chairman
Jesse Smart

Normal

Paul Mattingly
Vernon C. Maulson
Garrett Scott—Chairman

Technical Staff

The present staff consists of eight persons—the Executive Director, two Principal Planners, two Associate Planners, a Planning Technician, a Secretary, and a Typist.

Herman Dirks, Executive Director
Ken Emmons, Principal Planner
Mary Anne Nelson, Principal Planner
Jon Johnston, Associate Planner
Tom Hamilton, Associate Planner
Bill Givens, Planning Technician
Linda Rigdon, Secretary
Linda Goecke, Typist

Regional Studies (County-Wide)

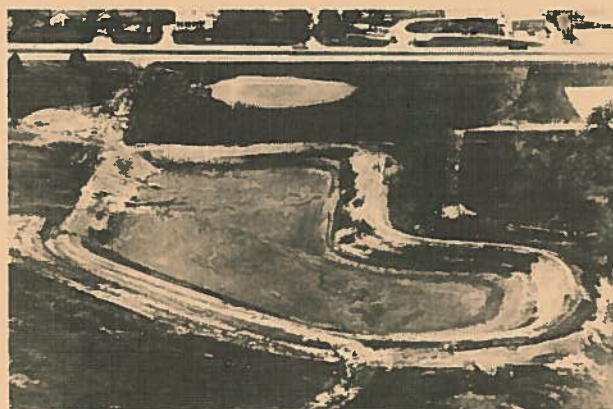
Stormwater

The Commission has accepted the responsibility of coordinating the study of flooding problems in the area. The work completed to date includes the awarding of a contract to Aero-Metric Engineering, Inc. to provide aerial photography and topographic maps for a 76 square mile area, including Bloomington and Normal. The



Shown above is a portion of one of the aerial photographs taken by Aero-Metric Engineering Co., Inc. as a part of the stormwater drainage study.

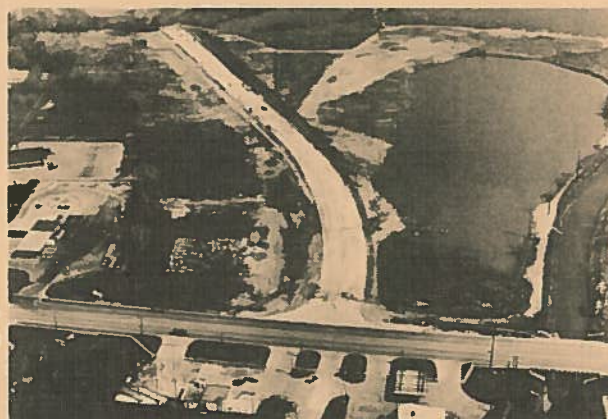
aerial photography has been completed and color prints delivered to the Commission. All necessary ground control has been completed and delivered to the mapping company. The Commission is negotiating an agreement with the Corps of Engineers and the Division of Water Resources to provide an analysis of stream bank overflow problems and recommendations for solving the problems identified. These studies will be coordinated with an evaluation of the storm sewer system to produce a complete plan for improved stormwater drainage in the area.



New stormwater detention basin located on the Mid-America Industrial Park property south of State Farm Park.

Federal Flood Insurance Program Management

The Commission has entered into a contract with the Illinois Division of Water Resources to assist McLean County communities and the County government in their efforts to convert from the emergency to the regular program. The work to be performed includes assessment of flooding problems, modification of regulation, and assistance in application preparation.



Extension of Alexander Road north of West Marker Street.

Transportation

Transportation planning during 1982 primarily emphasized the short range planning program. The short range planning program consists of three major components, including the **Transportation System Management Plan**, **Transit Development Program**, and **Transportation Improvement Program**. Each component has a planning time frame of five years or less.

The **Transportation System Management** planning process focused on improving traffic safety, the physical condition and operational efficiency of the urban area roadway system, as well as implementation of specific elements of the Transit Development Program. Specific elements of this component included analysis of regional accident data trends, identification of hazardous roadway segments, analysis of specific roadway corridors to improve both traffic safety and traffic operations.

The **Transit Development Program** is a planning process that continually focuses on improving the operational effectiveness and financial performance of the Bloomington-Normal Public Transit System. Specifically,

Pantograph Photo

Pantograph Photo



Downtown Bloomington Transfer Center on Front Street.

during 1982, planning efforts have focused on route evaluation, specific route and schedule changes based on the evaluation process, and capital improvements to the system's garage and office facilities. This package of service and facility improvements are designed to reduce overall service costs while simultaneously producing more revenues by attracting more riders.

The Transportation Improvement Program represents the culmination of these planning processes as it contains the roadway and transit capital improvement programs through fiscal 1987. Additionally, this document shows the expected funding levels for operating costs



Pantograph Photo

The new Eastland Drive is presently under construction from Veterans Parkway to Prospect Road.

under two funding scenarios. The first scenario assumes a phaseout of federal operating assistance while the second assumes a continuation of existing policy. Two funding scenarios were developed because there remains a high level of uncertainty about future federal operating assistance for public transportation.

Long range transportation planning involved completion and adoption of the Long Range Element of the Street and Highway Plan for the urbanized area. The purpose of this document is to communicate public policy concerning development of the roadway system and provide guidance to all units of government assisting the system improvement decision-making process without being project specific.

These components of the total transportation planning process represent a comprehensive package of planning activities that enable local governments to effectively use the financial resources available to maintain and improve the region's transportation system. Efforts such as these will continue and become more important as the availability of financial resources for transportation and other elements of the urban system become more scarce and uncertain.

A-95 Review

The objective of the A-95 Review and Comment Process is to provide state and local officials with a mechanism for influencing proposed federal assistance in light of their own comprehensive planning goals and objectives.

Applicants applying for federal funding are required to notify the McLean County Regional Planning Commission (the Sub-state Clearinghouse) of their intent.

Below is a list of the applicants reviewed by the staff:

1. Review of Draft/Final Environment Impact for the Clinton Power Station Unit No. 1
2. Catholic Social Services—Human Services Pre-application
3. McLean County—Money Creek Bridge Replacement
4. Project Oz—Drug Education Grant
5. McLean County—CETA Program Modifications to FY 82 Annual Application
6. State of Illinois—FAP 412 (U.S. Route 51)
7. Chenoa—Small Cities Community Development Block Grant Application
8. Danvers—Small Cities Community Development Block Grant Application
9. Lexington—Small Cities Community Development Block Grant Application
10. McLean—Small Cities Community Development Block Grant Application
11. Downs—Small Cities Community Development Block Grant Application
12. LeRoy—Small Cities Community Development Block Application
13. Bloomington/Normal—1983-1987 Transportation Improvement Program
14. East Central Illinois Area Agency on Aging—Annual Application and Amendments

15. McLean County—Head Start Annual Application
16. East Central Illinois Area Agency on Aging—Elderly Services Application
17. McLean County—CETA Program FY 83 Annual Application
18. Bloomington/Normal—Airport Authority Construction (Taxiways)
19. YWCA of McLean County—Retired Senior Volunteer Program Annual Application



This house at 1010 S. East St. in Bloomington is being rehabilitated with Community Development Block Grant funds. The work is being done by the joint City/District 87 Vocational Education Program. The dilapidated house was acquired by the City, and participants in this training program are returning it to its intended use—a home.

Program Development Community Development

The staff provides assistance to the City of Bloomington, the Town of Normal, and the rural communities of McLean County by providing planning assistance and documentation included in their applications for State and Federal Community Development Block Grant Funds. During 1982, the City of Bloomington received \$806,000 and the Town of Normal received \$359,000 for improvements to the communities' housing and public facilities.

Special services provided under Community Development included the preparation and analysis of a neighborhood survey (Normal), and preparation and research of a Commercial Loan Program (Normal), and preparation of the application to the U.S. Bureau of the Census for participation in the Neighborhood Statistics Program. The Bloomington Township Small Cities Community Block Grant Program was completed in 1982. This three-year program funded the construction of new sewer and water mains, reconstructed streets, and rehabilitated homes.

Small Cities Grant Application Assistance

When the Illinois Department of Commerce and Community Affairs took the responsibility of administering the Community Development Block Grant Pro-

gram, the Commission staff was approached by numerous communities to aid in the preparation of their grant applications. The staff provided assistance to Chenoa, Danvers, Lexington, and McLean.



(MCEOC)

McLean County Economic Opportunity Corporation

During 1982, the MCEOC broadened its responsibilities after being recognized as a full Community Action Program (CAP) Agency. In light of the added responsibilities, the MCEOC contracted with the McLean County Regional Planning Commission to provide planning assistance required to meet the needs of their clientele. The Commission staff has provided general data analysis on housing and poverty in McLean County and an Emergency Energy Plan. The staff has also prepared a **Housing Handbook** for residents of McLean and Livingston Counties. The Commission staff also aided the MCEOC in the preparation of a Community Services Block Grant Application.



Community Development Block Grant funds were used to rebuild this pedestrian bridge in Miller Park.

Special Projects 1980 Decennial Census

The staff continued to act as a liaison to the Bureau of the Census for the decennial census taken April 1, 1980. Local knowledge and documentation of various conditions were requested as a part of the Bureau's efforts to certify the information they received.

As increasing amounts of census data have become available, the Commission has continued to review and analyze the information. Since the publication of data will be minimal, the staff has been actively participating in the dissemination of census information. This includes speaking to groups interested in the use of

census data, acting as a clearinghouse for census data and generally providing information to the public on what data may be found in the census. The Commission has also provided data to the Bureau on **Major Retail Centers** in the County and the annual Boundary and Annexation Survey for the Town of Normal and McLean County. The Commission staff has also been designated as an "affiliate" with the Illinois State Data Center Cooperative.

Economic Development

The staff researched and provided numerous site and/or location maps for the potential development of industrial and commercial properties located in the metropolitan area.

Industrial/Economic Development

The Commission has been actively participating in programs and plans for Industrial/Economic Development. The staff was requested to provide and analyze data pertaining to the development of a Tax Increment Financing Plan for the City of Bloomington. The plan itself will be prepared now by the staff. Other staff involvement includes assistance given to Bloomington and Normal in their participation in an Industrial Development Seminar.



Rural Reference System

The Commission has entered into a contract with the McLean County Highway Department to assist in establishing a coordinate system of numbering rural roads in the County. The staff has completed a reproducible large scale (1 inch equals 1 mile) black and white map and a small scale black and white map (1 inch equals 2 miles) depicting the coordinates for all rural roads. Copies of the small scale map will also be printed in color and mailed to all rural road residents in the near future. The project will be completed by February 1, 1983.

Technical Assistance

McLean County

Zoning—The staff has prepared reports for the McLean County Zoning Board of Appeals concerning the following cases during the last fiscal year:

- 5 Zoning Map Amendments
- 2 Zoning Text Amendments
- 15 Special Uses
- 15 Variations

City of Bloomington

Zoning—Between December 1, 1981, and November 30, 1982, the staff has provided written recommendations to the Bloomington Planning Commission, Board of Zoning Appeals and City Council on:

- 19 Zoning Map Amendments
- 6 Zoning Text Amendments
- 9 Special Use Permits
- 1 Site Plan Review

Subdivisions and Planned Unit Developments—

Between December 1, 1981, and November 30, 1982, the staff has reviewed and provided planning advice to the Bloomington Planning Commission and City Council on 7 subdivisions and planned unit developments.

Capital Improvements Program—The staff has advised the Bloomington City Manager, Director of Finance and other department heads in completing a five-year capital improvements program for the 1983-1988 Five Year Budget.

Land Subdivision and Planned Unit Development Code—The staff has prepared a new Land Subdivision and Planned Unit Development Code which was adopted by the City Council.

Town of Normal

Zoning—Since December 1, 1981, the staff has provided reports and recommendations, as a part of the Town staff, to the City Manager, Normal Town Council, Planning Commission, and Zoning Board of Appeals concerning:

- 10 Zoning Map Amendments
- 12 Zoning Text Amendments
- 18 Zoning Variations
- 4 Special Use Permits
- 1 Zoning Appeal

Subdivisions—The staff has provided reports and recommendations, as a part of the Town staff, to the City Manager, Town Council, and Normal Planning Commission on 2 preliminary plans for planned unit developments.

Normal Sign Code—In cooperation with other Town staff members, the staff prepared the final draft of a new Sign Code for the Town; this document was adopted November 15, 1982, by the Normal Town Council.

Employee Attitude Survey—The staff conducted an employee attitude survey of all full-time and permanent part-time employees of the Town. The survey consisted of a written 69 point questionnaire, which all employees were expected to complete, and each employee was given the option of participating in a confidential interview to discuss specific matters that were of concern. Normal's City Manager initiated the survey in order to determine if there were areas of concern to employees that they were reluctant to personally bring to the attention of their supervisor or department head.

Financial Report

December 1, 1981 through November 30, 1982

Income:

CETA	\$ 8,062.42
HUD (1-288)	13,338.62
FHWA	40,182.64
UMTA	23,164.00
IDOT (Public Transit)	2,489.75
DWR	3,500.00
CD (Bloomington)	14,619.01
CD (Normal)	6,504.50
MCEOC	10,000.00
Aerial Photography	40,095.44
Rural Reference	2,601.86
Bloomington	31,800.00
Normal	31,800.00
McLean County	31,800.00
	<u>\$259,958.24</u>

Expenses:

Books	\$ 312.40
Services	2,430.89
Dues	1,803.50
Furniture	264.00
Auto Expenses	1,335.84
General Insurance	514.00
Hospital Insurance	3,436.20
Supplies	1,452.97
Postage	1,785.16
Rent	10,200.00
Reproduction	4,951.60
Retirement	17,572.38
Unemployment	518.70
Salaries	150,192.00
Telephone	2,178.03
Travel	1,538.14
	<u>\$200,485.81</u>
Aerial Photography	39,970.50
Rural Reference	204.16
MCEOC	241.29
	<u>\$240,901.76</u>

Bank Balance (12-1-81)	\$ 44,282.61
Income	<u>259,958.24</u>
	<u>\$304,240.85</u>
Expenses	<u>240,901.76</u>
Bank Balance (11-30-82)	\$ 63,339.09

Bibliography

Report No. AR-MCRPC-82

Title: Fifteenth Annual Report—McLean County Regional Planning Commission

Report Date: December, 1982

Author: McLean County Regional Planning Commission

Performing Organization: McLean County Regional Planning Commission

207 West Jefferson Street
Bloomington, Illinois 61701

Type of Report and Period Covered: Fifteenth Annual Report

Abstract: This is the Fifteenth Annual Report made by the McLean County Regional Planning Commission to the residents and supporting agencies within McLean County, Illinois. The report includes a resume of the Commission's activities for the fiscal year 1981-1982, including work completed, financial statements, listing of members and proposed work program.

Availability Statement: Limited copies of this report will be available at no charge to residents of McLean County, Illinois.

Price: \$2.00

Design and Photography by Bill Givens
Mary Anne Nelson, Editor